



EMERGENCY EXIT LIGHT

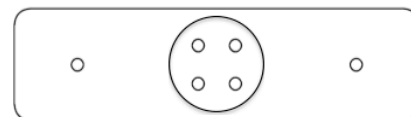
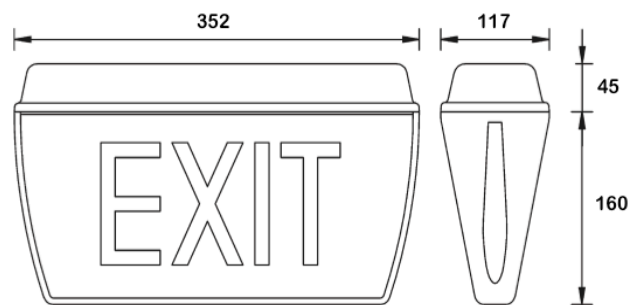
Model: SLES-B

SPECIFICATION:

Input Voltage:	220V+/-10%, 50/60Hz
Mode of Operation:	Combined maintained or non maintained
Lamp:	SMD LED
Safety Feature:	Over discharge and over charge protection
Rated Duration:	2/3 hours
Power Consumption:	3.9VA
Fitting Construction:	Fire retardant PC casing and fog diffuser
Battery Type:	High temperature Ni-Cd
Warranty:	1 year

Benefits:

*Water proof
High durability
Easy Installation
AC / DC Operated
Maintenance Free
Power saving 80%*



Dimension: mm NTS

Weather proof



Note: Due to continuous development and improvement, our company reserve the right to change specification without notice